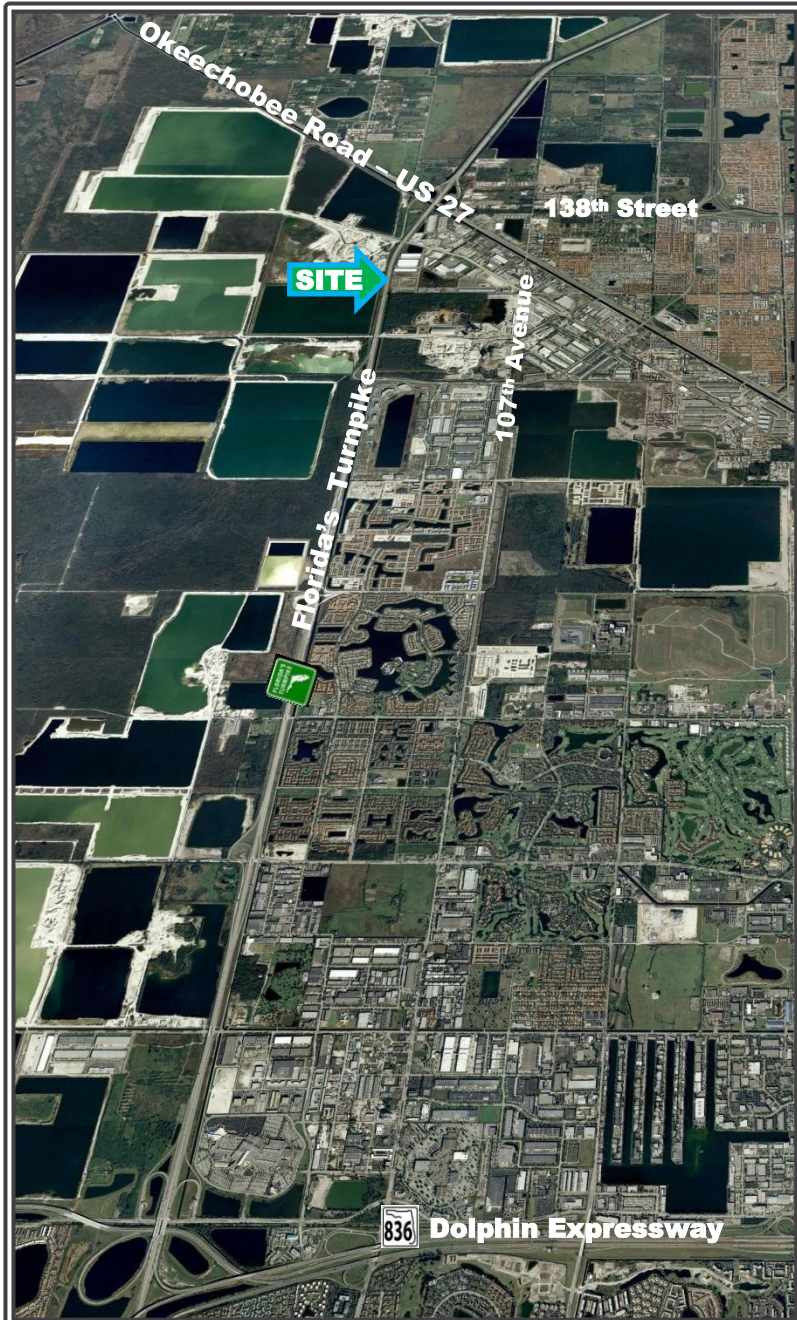


1 - 2.2 ACRES
INDUSTRIAL LAND
AVAILABLE

Florida Turnpike and NW 115 Avenue
Medley, FL 33178



- DIRECT EXPOSURE: Florida's Turnpike
- EASILY ACCESSIBLE: From major roadways: Florida's Turnpike, SR 826 and SR 836
- READY FOR DEVELOPMENT: Parcels range from +/- 1 to 2.2 acres zoned M-1 which allows most commercial uses and lays outside of well-field area.
- OPPORTUNITY: For spec development; office / flex building; self-storage facility or warehouse build- to-suit
- NEARBY AMENITIES: Include restaurants, residential communities; hotels and shopping centers
- SALE PRICE: \$13 / Per Square Foot
\$566,280 / Per Acre



For more information or to schedule a tour,
please contact:

George I Pino, SIOR, RPA
gpino@statestreetre.com
305.447.3390
www.statestreetre.com